

Town of Stonington

Stonington
Residents Only

Disposal Guidelines

Solid Waste Department

www.stonington-ct.gov

www.recyclect.com



Single Stream recycling baled and ready for shipment Willimantic Waste/Casella Facility

Residential Curbside Trash Collection

Utilizing a Pay-As-You-Throw program, Stonington residents purchase official yellow bags which are picked up weekly for no charge. Single stream recycling and food scrap waste collection is also offered



Textile Recycling
Also part of the complimentary curbside collection, the pink bag program recycles your unwanted textiles



Stonington Solid Waste Dept
Town Hall

152 Elm Street
Stonington, CT 06378
(860) 535-5099

Open Mon - Fri 8:30am - 4:00pm

Stonington Transfer Station

151 Greenhaven Road
Pawcatuck, CT 06379
(860) 535-5088

Open:

| | |
|-----------|-----------|
| Sundays | 8am - 1pm |
| Monday | 9am - 3pm |
| Tuesday | 9am - 3pm |
| Wednesday | Closed |
| Thursday | 9am - 3pm |
| Friday | 9am - 3pm |
| Saturday | 8am - 3pm |



Table of Contents

- **Residential Trash Collection**
Page 3
- **Single Stream Recycling**
Page 5
- **How Do I Dispose of.....**
Page 6
- **Transfer Station Benefits**
Page 18



Let's talk
Less
trash

REDUCE, REUSE, RECYCLE





Pay-As-You-Throw



Why yellow bags?

Pay-As-You-Throw, also known as SMART (Save Money and Reduce Trash) means you only pay for the amount you throw away. SMART programs save the consumer by reducing the amount of waste through recycling, composting, and waste prevention. A more thoughtful consumption being the least cost and highest priority.

User fee programs create an awareness of solid waste issues which leads to greater recycling and significant reductions in trash generation. More towns across the country are instituting fees for trash disposal. User fees are the most equitable way of charging for waste disposal. Residents can therefore directly reduce their costs by following recycling guidelines.

Specially marked yellow bags are available at stores throughout Stonington. All trash must be placed in these bags or it will not be accepted. The cost of transportation to and disposal at the Waste-to-Energy facility is factored into the cost of these bags. The use of the yellow bags also prevents Stonington from being mistakenly charged for other's waste.

How much do the bags cost?

Bags are sold in two sizes: 33 gal (large) & 15 gal (small). A sleeve of five (5) 33-gal. bags will cost \$7.50; and a sleeve of five (5) 15-gal. bags will cost \$4.25. The cost throughout all locations is fixed and there is no tax.

Where do I buy the bags?

Stonington Town Hall (Solid Waste Dept.)

152 Elm Street, Stonington, CT

Big Y

Route 1 Mystic

Poquonnock Rd. Groton

Best Way Food Mart

380 Liberty Street, Pawcatuck,

Cash True Value Home Center

Whitehall Avenue, Mystic,

C Depot-Citgo

48 Stonington Road, Stonington

Chucky's

60 South Broad Street, Pawcatuck

Honey Plus Convenience Store

163 South Broad Street, Pawcatuck

Fleming's Feed & Hardware

769 Route 1, Stonington

Henney Penney

Route 2, Pawcatuck

2 Roosevelt Ave, Mystic

McQuades Marketplace

10 Clara Drive, Mystic

106 Main Street, Westerly, RI

Stop & Shop

91 Voluntown Road, Pawcatuck

222 Route 12, Groton

20 Post Road, Westerly, RI

Stonington Food Mart

522 Stonington Road, Stonington

Tom's News

133 Water Street, Stonington



Taking out the trash each week is simple. But, there are a few practices you can do to make sure your waste and recycling is properly disposed of. It is our goal to efficiently serve your home each week. A missed service pick up can be frustrating for homeowners.

The Town of Stonington provides once per week curbside collection of household trash, recyclables and pink textile collection bags. Household trash must be placed in Stonington Yellow bags and placed at the curb with your recycling and textiles by 6:30 a.m. Following a few simple guidelines will ensure your containers are emptied each service day.

All yellow bags must be tied and not overweight. Large bags hold #35lbs and small bags hold #20lbs. Bags can be placed curbside in cans or on the ground.

We ask that the cans are not any larger than 35 gallons as the hauler does not have mechanical arm trucks. Yellow bags can be lifted out of your can by the hauler, however they must lift cans filled with loose recyclables.

Please always secure your recycling to prevent wind blown litter. Recyclables in plastic bags will not be accepted as the bags jam the sorting equipment. Flatten cardboard and crush recyclables to conserve space and make them less apt to blow away.

Mystic Fire District #4 residents are provided an additional pick up service for yellow bags only. This service is provided to you by the Mystic Fire District.

Call the Solid Waste Department with questions or concerns (860) 535-5099

**REDUCE, REUSE AND
RECYCLE RIGHT!**

ACCEPTABLE RECYCLING ITEMS

All Containers Should be Empty And Clean



**Aerosol Cans
(Food Grade)**



Aluminum Foil



Aluminum Tray



Paper Egg Carton



**Plastic Bottles
(Water, Soda)**



**Paper Milk /
Juice Cartons**



**Magazines /
Catalogs**



Newspaper



Office Paper & Folders



**Glass Bottles
(all colors)**



**Cereal / Shoe
Box**



**Plastic Cups
Lids / Straws go in trash**



**Plastic Food
Clam Shells**



**Metal & Aluminum
Cans**



Phone Books



Junk Mail



Paperback Books



PLEASE RECYCLE



What's **IN?** What's **OUT?**



Recycle 

To learn more, go
to RecycleCT.com!



Recycling remains one of the best ways to protect natural resources and preserve the environment. The business of recycling is facing challenges due to significant changes in the recyclables export market and stricter quality standards. As a result, recyclers have had to add additional staff and machinery to improve the sorting quality of incoming material, which has raised the cost of recycling.

While single stream recycling, which means all items in one bin or container, increases recycling volumes, it also significantly increases contamination. Contamination occurs when non-recyclable items are placed in a recycling container. This requires more intensive sorting which is more costly.

Let's do our best to Recycle Right! Follow these guidelines to help reduce contamination of recycling:

Aerosol Cans (Food Grade) - Food grade aerosol cans such as cooking oils and whipped cream can be recycled curbside. Aerosol containers are generally made of steel which is easily recycled when empty. The best approach with aerosols is to completely use up the contents of the can, including the propellant. An aerosol can is empty when you no longer hear any air released when the nozzle is depressed and the can feels empty when shaken. Aerosol cans containing propellant are explosive if crushed or incinerated. Do not put full or partially full aerosol cans in the trash or recycling; even food grade cans may explode in the compactor truck and harm workers. Full or partially full food grade aerosol cans should be disposed of at a Household Hazardous Waste Collection event.

Aerosol Cans (Non-Food Grade) - Aerosol cans containing paint, pesticides, and cleaning products are several examples of materials that may be hazardous when discarded. Full or partially full cans containing these products should be brought to a Household Hazardous Waste Collection event for disposal. Completely empty cans can be placed in your yellow bag.

Ammunition - To properly dispose of old or excess ammunition, contact the Stonington Police Department or CT State Police to surrender the ammunition. This is the only proper way to dispose of ammunition.

Bags (plastic) - The Transfer Station is adding a new program to recycle plastic bags and plastic film wrap. As participants of the NexTrex plastic film recycling challenge, the Transfer Station will have disposal cans available to place your recyclable polyethylene.

- What can go in the bin? Grocery bags - Stretch film and pallet wrap - Plastic mailer bags - Case overwrap - Bread bags - Paper towel/toilet tissue overwrap - Bubble wrap - Dry cleaning bags - Produce bags - Newspaper sleeves - Ziploc or food storage bags and ice bags.
- Do not put these items in the bin: Frozen food bags - Chip bags - Salad mix bags - pet food bags - compostable bags - vinyl or boat (shrink) wrap.

All film must be clean, dry and free from food residue.

Don't see your item on the list? Try these tests to see if your plastic is recyclable polyethylene or not.

- See if the package will stretch when you pull it. If yes, it can be included. If it tears like paper, then it is not recyclable.
- Is the plastic shiny or does it make a crinkly/crunchy sound in your hand? If yes, it should be placed in the yellow bag.

Batteries - Rechargeable batteries (tools, cellphones, etc.) may be recycled at boxes at the Stonington Transfer Station and at the Solid Waste Dept in the Town Hall.

- **NiCad and button cell batteries** (portable computers, drills, camcorders and other small battery-operated devices) can be brought to the Transfer Station or a Household Hazardous Waste Day for safe disposal
- **Alkaline batteries** (AA, AAA, C, D, 9v) can be placed in your yellow bag as household trash. Alkaline batteries haven't contained mercury for nearly two decades and contain a small amount of metal -- such as nickel, cobalt, zinc, manganese or silver. To say they're not recyclable isn't true, but at this point, there is no cost-effective method for de-manufacturing them. If you use alkaline batteries, the best disposal option is to throw them away with your weekly trash. Do not collect them in a separate container. Separating alkaline batteries from your trash actually might be worse for the environment. In higher concentrations they could cause problems at the incinerator. If you have a collection of spent alkaline batteries to dispose, you may put them in the battery collection box at the Transfer Station, then throw future ones in your yellow bag.
- **Lead-acid batteries** (car and garden equipment) can be brought to the Stonington Transfer Station for recycling.

Blades, razor - Disposable and cartridge razors and blades are comprised of a mix of materials, including several types of plastics as well as metal components, they cannot be recycled in curbside bins. Place razors in your yellow bag. Take extra care disposing of razor blades. We recommend wrapping razor cartridges in cardboard and tape to ensure they don't rip through garbage bags and injure sanitation workers.

Books - Consider donating books to your local library, senior center, school libraries or charities. If they're not in good condition, but not moldy or wet, you can bring them to the Stonington Transfer Station and deposit them in the Book Recycling Bin. Paperback books can be placed in your recycling bin. Please be mindful of the weight for the safety of our haulers.

Bottles -

Glass - Rinse out glass bottles and jars and put in mixed recycling (single stream) bin or cart. Metal lids can go loose in the recycling.

Plastic - (soda, water, etc.) This item can be returned for a \$0.05 deposit at a local grocery store or redemption center. Or, you can put in your recycling bin. Rinse, flatten and replace cap before putting in recycling. Loose caps go in the trash.

Prescription - Place small prescription bottles in your household trash. Prescription bottles are made of #5 plastic (which is polypropylene, a recyclable plastic). But it's their size that makes them problematic. The recycling facility sorts recyclables with a rotary screen with small holes that sifts material and removes unwanted debris. Bottles, cans, and containers continue on for proper recycling, but broken glass, pieces of plastic that are too small to recycle, natural debris such as rocks, and other items fall through the holes and are sent to the landfill. Any item the size of a credit card or smaller will fall through the holes and not be recycled. Larger prescription bottles can be placed in the recycling bin.

Spray - The spray bottle is acceptable in the mixed recycling (single stream) program but the pump and spray should be removed and put in the trash.

Vitamin - Large vitamin bottles - glass or plastic - are acceptable and can be put in the mixed recycling bin. Smaller bottles that can fit in a 2 inch square should be put in the trash.

Caps, bottle - Because of their size, small loose bottle caps fall through the screeners and end up being missed for recovery. While the recycling facility is able to separate materials like glass, aluminum, steel and plastic containers, metal bottle caps are too small to be identified, so they often end up going to the landfill. Plastic caps that are secured to bottles may be put in your recycling bin.

Bows, Ribbons - As pretty as they make a package, the plastic-paper composite of most bows is not recyclable. Also, ribbons and bows get tangled in the sorting equipment, requiring employees to cut out the ribbon by hand, which leads to downtime and safety concerns.

Car Seat (child) - Outdated car seats or car seats that have been damaged should not be reused or donated. Car seats should be put in a yellow bag for disposal or brought to the Transfer Station to be tossed in the bulky waste can.. Target and Walmart both offer Car Seat Trade-In events, check their websites for more information.

Cardboard - All cardboard boxes should be flattened and placed in your recycling bin. Breaking down your cardboard is important, and not doing so can result in expensive waste and recycling costs. Bulky cardboard that is not broken down properly results in a lot of wasted space within a container, leading to higher transportation costs.

Carpet/Rugs - If rug is in good condition consider donating it. Unwanted or damaged rugs can be brought to the Transfer Station to be placed in the bulky waste can. Carpet and rugs must be cut into 4' x 4' pieces or smaller. These are not recyclable and there is a fee.

Cans - A simple rinse and toss in the bin. All types, aluminum, steel and tin are accepted. Can lids can be placed back in the can and tossed.

Cat Litter - Pet waste is not acceptable in CT's mixed recycling program and it should not be composted. Bag your pet waste and place in your yellow bag for pick up.

Christmas Trees (live) - The Town of Stonington offers free curbside pick up of your live Christmas trees for one week during January. Place your tree, free of all decorations of any kind, out at the curb on your regularly scheduled trash pick up day. Trees over 6' feet must be cut in half to facilitate pick up. Pick up dates will be posted on the Solid Waste Department page on the Town website or call the office at (860) 535-5099.

Cooking Oil - can be brought to the Transfer Station to be recycled. A drum with a screen filter is located next to the fluorescent tube shed. Pour oil into the drum then toss empty container into the bin next to the drum or take with you to use again.

Corks - are not recyclable. Use for crafting or toss in your yellow bag.

Copy paper - This item can go in your recycle bin. Shredded paper may not. Residential paper shredding events are held annually as part of the Household Hazardous Waste events. Check [www.stonington-ct.gov/solid waste](http://www.stonington-ct.gov/solid%20waste) for updates.

Ceramic mug - If your item is in good condition, consider donating to a local non-profit. If not place it with your household trash.

Detergent Bottles - Rinse and replace cap. Place in recycle bin.

Egg cartons - Paper and plastic egg cartons can go in the recycle bin. Styrofoam cartons go in the trash.

Electronics - The Stonington Transfer Station accepts E-Waste for recycling. E-Waste includes computers, laptops, fax machines, monitors, keyboards/mice, TV's, Stereo/Video Equipment, Speakers, Printers/Scanners, VCR's, cable boxes and cell phones. E-Waste is collected in bins which are emptied by NewTech Recycling and transported to their NJ processing plant. Newtech separates the raw materials from the electronics then provides these elements to the manufacturing industry to be used again. Recycling and recovery are the best options for all classes of electronics. The E-Waste bins are located on the right side of the main disposal area

Envelopes - Bubble mailers with plastic bubble inside and paper outside goes in your yellow bag. Plastic Tyvek and Bubble mailers with plastic inside and out go in your yellow bag. Large paper envelopes along with junk mail and junk mail envelopes, even those with film windows, can be placed in the recycle bin.

Flag, American - American flags should be disposed of properly and not placed in your recycling bin or textile bag. There is a drop off box in the lobby of the Town Hall to place damaged or unwanted flags. You can also drop off the flag to an attendant at the Transfer Station. The flags will be collected and properly retired by Boy Scout Troop #9 Pawcatuck.

Fluorescent light bulbs - The Stonington Transfer Station will accept fluorescent light bulbs for no charge. The bulbs are collected by a bulb recycler that uses special machines to extract the mercury and break down the aluminum fixtures and glass casing. Mercury can be reused in new bulbs. Aluminum is recycled as scrap metal, and the glass is downcycled into materials like concrete or ceramic tile.

Frozen food boxes - The paper for frozen food containers has to protect the contents as well as withstand the moisture that can weaken the package. The wax-like substance used on frozen food boxes keeps the paper from breaking down when the paper is pulped for recycling, thus making them not recyclable. Place these items in your yellow bag.



Connecticut has too much trash and not enough room.
There are solutions – but not without you.

Garden Waste - Leaves, brush and limbs can be brought to the Transfer Station for no charge if you are a Stonington resident. Garden waste such as sod, dirt, and rocks will be charged a \$20/ton fee.

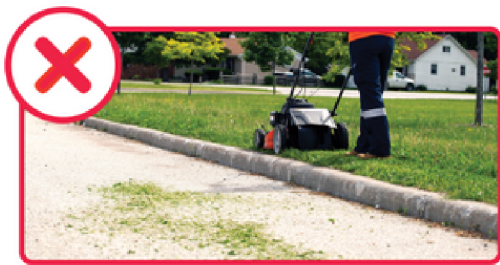
Glass Bottles and Jars - Rinse out bottles and jars and place in your recycling bin. Metal lids should be removed and placed loose in the bin.

Glass (cookware) - Also referred to as Pyrex, these types of glass products cannot go in the recycling bin. The type of glass used in microwave plates and Pyrex cookware melts at a different temperature from the glass used for bottles and jars. This means that if the plate, Pyrex or microwave glass is mixed with bottle and jar glass it causes imperfections in the end product. If Pyrex enters the glass recycling process it can result in new containers being rejected.

Glass - Plate glass (windows) and drinking glasses cannot go in the recycling bin. These present issues just as the Pyrex glass listed above.

Grass clippings - You may bring grass clippings to the Stonington Transfer Station for no charge. Grass clippings do not belong in the leaf pile but brought to the top of the yard and disposed of in the brush pile (Mt. Brushmore) or dispose of small amounts in Can #6 in the recycling area.

But, did you know leaving grass clippings on the lawn can actually be healthy for the grass, as it helps build a strong and nutrient-rich soil? They serve as a natural fertilizer, providing essential nutrients to the soil. Additionally, leaving grass clippings on the lawn can save time and effort, as it eliminates the need for bagging and disposing of the clippings.



**DON'T
BLOW IT!**



**Help maintain safe
roads by keeping
grass and leaves on
your property**

Hangers, metal - Consider donating to a thrift shop otherwise these can be brought to the Stonington Transfer Station and placed in the metal bin. They are not recyclable and will cause sorting equipment to jam.

Hangers, plastic and/or wood - Consider donating to a thrift shop otherwise these can be brought to the Stonington Transfer Station and place in the bulky waste bin. Neither are recyclable.

Household cleaners - Items such as drain cleaners, degreasers and other household products are Household Hazardous Wastes (HHW). Unused material should be taken to a HHW collection center or one-day collection event. Check www.stonington-ct.gov/SolidWaste to check the current year hazardous waste collection dates. The Stonington Transfer Station does not accept household cleaners or chemicals.

Ice Cream container - Though this item follows the basic rule for fiber recycling in your bin (it's paper, cardboard, or a carton), this particular item cannot be accurately sorted and/or sold to recyclers. The containers often have a waxy lining inside which is plastic on a paperboard stock. The plastic can not be separated.

Ink/Toner cartridges - When a new ink cartridge is purchased, most often you will find a return shipping label for your empty cartridge. Additionally, many toner and ink cartridges can be refilled and reused. Stores such as Best Buy and Staples can either refill your cartridge or recycle cartridges. Call your local store for information.

Juice box - This item goes in your recycle bin. Throw straw in the trash and completely empty out juice box then place in bin.

Juice and food pouches - These are not recyclable in your bin. Pouches consist of layers of different materials laminated together like polyester, aluminum foil, polyethylene, Mylar, paperboard, and more. They also have spouts, caps, or zipping mechanisms made of other types of plastics. These items should be thrown in the yellow bag.

Junk Mail - Letters, flyers and numerous other items come to you printed on paper. It is fine to place it in your recycling bin. However, if a junk mail item contains plastic (such as fake credit cards) or sheets of return address labels, open the envelope and remove those items. They will need to go in your trashcan. Envelopes with small plastic windows are acceptable without having to remove the plastic.



How to Dispose of Unwanted Medications

Are you throwing unused medications and over the counter products down the toilet or drain? STOP!!

Flushing medications down the toilet or sink causes water pollution, impacts drinking water and has adverse effects on septic systems, fish and aquatic life.

SAFE WAYS TO DISPOSE OF MEDICATIONS AND OTC PRODUCTS INCLUDE:

1. Follow the directions below and put them in the trash.
2. A medication drop box can be found at the Stonington Police Department. This box is secured in the lobby and is accessible anytime the department is open. No questions asked, just drop the unwanted medications in and they will be safely and securely destroyed.
3. Call your local pharmacy to inquire about prescription drop boxes. Most CVS Pharmacies have drop boxes.

Directions on how to throw away in the trash:

1. Keep medication in its original container. Cross out patient's name or remove label.
2. Modify the medications to discourage consumption.
 - For pills or capsules: add a small amount of water to partially dissolve them.
 - For liquid medications: add salt, flour, kitty litter or spice to make a pungent, unsightly mixture that discourages anyone from eating it.
 - For blister packs: wrap pack with pills in duct tape or remove medication from the pack and modify as noted above.
3. Seal and conceal.
 - Tape medicine container lid shut with duct tape.
 - Place inside a non-transparent bag or container so it cannot be seen. (ie, empty yogurt or margarine tub)
 - Do not conceal medicines in food products.
4. Discard the container in your trash can. Do Not put container in your recycling bin!!

To properly dispose of sharps:

Seal them in rigid, puncture-resistant containers that you can't see through (i.e. bleach or detergent bottles, coffee cans, etc.);

Label the containers "Do Not Recycle;" and,

Reinforce containers with heavy-duty tape before throwing them in your household trash.



NOTE: Certain chemotherapy drugs may require special handling. Please check with your health care provider or pharmacist before disposing.

K-Cups - Coffee pods are NOT accepted in CT's mixed recycling (single stream) program, even if it has the word 'recyclable' on it. Coffee pods are considered contamination in Connecticut's program. Please put these items in the trash.

Newspapers - Do not tie or bundle your newspapers. Do not put newspapers in plastic bags. Putting newspapers in a PAPER bag is okay. Place out with your recyclables on pick up day.

Paper towels/napkins/tissues/paper plates - Because they usually come in contact with food wastes, greases, and possibly bodily fluids, they are not able to be "cleaned" during the recycling process and should not be with other "clean" paper waste like magazines and copy paper. Always throw these items into the the yellow bag.

Plastic wrap/bags - The Transfer Station is adding a new program to recycle plastic bags and plastic film wrap. Clean and dry plastic bags and other types of film, such as grocery bags, bubble wrap, newspaper bags, dry cleaning bags, wrap from cases of toilet paper or paper towels can be brought to the Transfer Station or Town Hall and placed in the film bin.

Plastic Pots - Black plastic planter pots, or trays are not acceptable in CT's mixed recycling program. Only plastic planter pots (green, white, red) are acceptable. Consider reusing if acceptable, if not this item gets put in the yellow bag.

Paint cans - Do not belong in your recycling bin or yellow bag. Bring empty dry paint cans to the Stonington Transfer Station for disposal in the bulky waste bin. Cans with paint are recyclable at the Transfer Station. See the *Transfer Station Operations* section for how to dispose of cans with paint.

Packing peanuts - Polystyrene foam has low density and very light weight which makes it unsuitable for automated sorting. CT MRFs (materials recovery facilities) use automated sorting and Styrofoam contaminates paper and other recyclables, reducing the value of these recycling commodities. Please place packing peanuts and Styrofoam in your yellow bag and secure it tightly before placing out at the curb to prevent wind blown litter.

Prescription Bottles - Small plastic bottles such as aspirin and pill bottles are not recyclable. As materials are processed at the recycling facility, special equipment sorts material types using magnets, optical sorters, crushers, shakers, blowers and other methods. The prescription bottles are too small to pass through the first screening process and end up in the rejected pile which is taken to the incinerator.

Spray bottle - Remove the pump and spray top and put in the yellow bag. The bottle may be rinsed and placed in your recycling bin.

Styrofoam - Styrofoam has no value in the recycling market since it is lightweight and expensive to ship. The shipping costs outstrip its value. Place styrofoam in a yellow bag or if you have large pieces you can discard them for free at the Transfer Station.

Toys, plastic - Plastic toys are not acceptable in the mixed recycling program. Toys with batteries are especially a problem. Do not put any battery-powered toys in your recycling bin. These items go in your yellow bag. Larger toys can be brought to the Transfer Station and thrown in the bulky waste bin.

Textiles - Consider donating to a local non-profit if the items are in good condition. The Town of Stonington in conjunction with F.E. Crandall Disposal and Simple Recycling, accepts textiles that you may consider unwearable and recycles them to make other products. Stains, missing buttons and tears are okay. If they're oily, wet or smell of mildew, put them in the trash. Textiles placed at the curb in Stonington's Pink Bag are picked up the same day as household trash. Pink bags are available at the Stonington Transfer Station and the Solid Waste Dept in the Town Hall

Toothpaste Tubes - Toothpaste tubes are often made with a combination of different plastics and a thin layer of aluminum. This mix of materials makes them hard to recycle and not accepted through your curbside recycling pickup. Toothpaste tubes stating they are made with #2 HDPE and recyclable are not accepted in CT's mixed recycling program. The recycler does not have the equipment or the personnel to check the tubes to make sure their contents have been removed and it is rinsed clean.

Utensils - metal/plastic. - If the metal utensil is in good condition, donate to local thrift shop. If in poor condition, put in trash. Sets of silverware may be placed in the Reuse Shed at the Transfer Station or thrown in the bulky waste bin. Toss Plastic utensils in your yellow bag as they are too small to get captured in the sorting process.

Window Blinds - Vinyl mini blinds whether plastic, faux wood or real wood are not recyclable. Put these items in your yellow bag or bring to the Transfer Station and throw in the bulky waste can. Aluminum blinds can be tossed in the metal bin at the Transfer Station.

Wrapping Paper - Decorative wrapping paper and gift bags are not recyclable in CT. However, plain wrapping paper can be recycled, even if it has a design on it. Decorative wrapping paper (anything that's glittery, metallic, or uses foil or other textures), must be placed in your yellow bag. Ribbons, bows and tissue paper are not allowed in the recycle bin and must also be placed in the yellow bag.

Did you know that recycling is mandatory in Connecticut? Everyone must recycle. That includes residents whether living in a single or multi-family building, every business including non-profits, and all public and private agencies and institutions (e.g. colleges, hospitals, local and state government agencies). It's the Law! Visit [RecycleCT](#) to learn about the benefits of recycling right.

Food Waste Collection



Pilot Program

This new organic collection program is a 1 year pilot program made possible from a Sustainable Materials Management grant from the State of CT.

This program will help meet Connecticut's goals to reduce waste and increase reuse, recycling and composting, while also creating stable, predictable, environmentally sound and self-sufficient waste disposal options.

With Stonington's pay as you throw yellow bag system proven successful, and the many other recycling opportunities offered to our residents, the State of CT Department of Environmental and Energy Protection (DEEP) considered Stonington to be a prime candidate for a curbside organic scrap collection program.

The Grant will pay all of the expenses for the 1 year program. There is no cost to the Town or its residents.

The program is voluntary - But we hope you give it a try.



As part of the Food Scrap collection program, the Town distributed collection kits.... a 4 gallon green lidded pail with a supply of 50 bags to line it with. If you didn't receive a collection kit, and would like one, stop by the Stonington Transfer Station, the Solid Waste Department in the Town Hall or call (860) 535-5099.

We are encouraging residents to collect food waste in the Town provided green bags, and then place the bag out with their other trash on their regularly scheduled trash pick up day

How easy can separating your food scraps be?



HERE'S HOW YOU CAN START

Line your green pail with one of the provided bags

Fill the pail with food scraps.

Put it out on the curb.

That's It!

If the green pail is too large for your kitchen you can also use any reusable container. Try placing a bowl or coffee can next to you when you are preparing food.

Toss the scraps in the bowl and when cleaning up toss the scraps into the green pail which could be stored in your garage, entry way or outside if the lid is snapped on tight.

Concerned about odors? Baking soda makes a great deodorizer. Just lightly sprinkle baking soda on the bottom of the pail to absorb odors.

Some people like to keep their food waste in their freezer.

You can freeze scraps like meat, bones, and dairy to prevent odors. Add these items to your pail right before putting it curbside.

When you get rid of any trash, you should make sure to tie the bags. You should always tie both your yellow bag and the food waste bag. By tying the bags you prevent trash from spilling out and it will keep the odor somewhat contained. If you keep the smells of your trash to a minimum, it will help keep away animals, especially the ones that look for food in the garbage.

What goes in your GREEN bag?

- uneaten leftovers and spoiled food
- tea bags and coffee grounds
- rice, grains, and cereals
- fruits and vegetables (no stickers)
- meat, small bones, fish, and seafood
- nutshells, eggs, and eggshells
- pizza box inserts
- dairy products (cheese, butter, yogurt)
- pasta, bread, grains, pastries
- paper towels or napkins
- chips and snacks



NO – Plastic bags,
glass, dirt, rocks,
sharps, or metal

TRANSFER STATION OPERATIONS

Open M-T-TH-F
9am - 3pm

Stonington Transfer Station

151 Greenhaven Road

Closed Wednesday's

Sat 8am - 3pm

Sun 8am - 1pm

When you enter the Transfer Station pull slowly up to the Gate House. A Gate Attendant will ask what you are bringing today and direct you to the proper disposal area. Many items are disposable free of charge. For all other fee based items, we accept cash, credit card or check. No permit or vehicle stickers are required.

Here Stonington residents can drop off at no charge:

Household waste - All unrecyclable household waste must be in official Stonington yellow bags. Place tied yellow bags in can #5. Tying your bags helps our drivers prevent loose material in the roll off truck. The yellow bags brought to the Transfer Station are transported by our certified CDL drivers to Wheelabrator in Lisbon, CT. The Wheelabrator Lisbon waste-to-energy facility provides disposal of municipal solid waste for communities while generating electricity for sale to a local utility.

Single stream recyclables - Glass Bottles, aluminum and tin cans, plastic bottles, cardboard, paper, magazines, junk mail and aluminum foil. No need to separate, no plastic bags, no styrofoam. Place loose recyclables and flattened cardboard in can #3. Guidelines for recycling can be found under the recycling guideline section.

Batteries - Place unwanted or dead batteries (rechargeable, alkaline, auto) in front of the gatehouse on the pallet or in the bucket. See the recycling guideline section for more information on batteries.

Pro Tip: Bringing in bulky waste, demo, general debris? You should enter to the LEFT, directly onto the scale.

Yellow bags, single stream recycling, metal or homeowners with organics? Stay to the RIGHT of the scale house

On arrival if you have to wait for the scale to clear please park curbside on the entry road and use your emergency flashers.

Paint - The Transfer Station will accept house paint as well as primers, stains, sealers, and clear coatings such as shellac and varnish. We do not accept aerosols (spray cans), solvents, and products designed and labeled to be used for industrial, marine or non-architectural use. To be accepted for drop-off, products must be in their original containers of no larger than 5 gallons in size, must have the original manufacturer's printed label on the container, and must be covered with a secured lid. We cannot accept non-lidded or leaking cans. Limited to 5 gallons disposed daily. Residents only, no commercial or businesses.

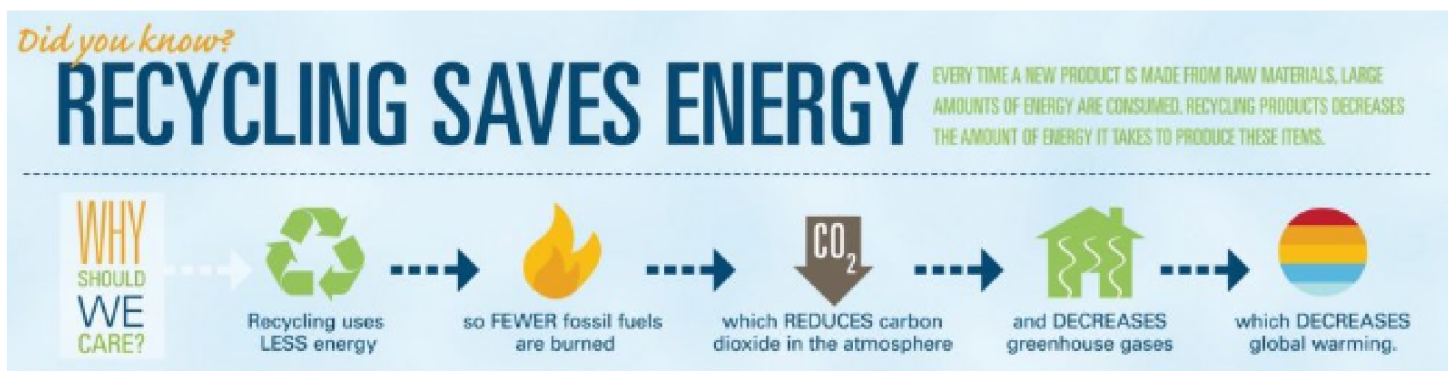
.Propane Tanks - #20 only - Unwanted #20 lb propane Tanks from grills whether empty or not, can be brought to the Transfer Station for proper disposal. Please use care when transporting. Always check to be sure nozzle is in the "off" position. Please inform gate attendant when disposing.

Waste Motor Oil, Oil Filters and Antifreeze - You may dispose of waste motor oil at the waste oil shed. Please pour the oil into the tank and toss plastic bottle into waste can. Used oil filters may be placed in the oil filter container. Antifreeze is poured into the antifreeze can. Please keep this area neat. Inform Attendant for any spills.

Fluorescent light bulbs - Fluorescent bulbs come in many shapes and sizes, but all contain trace amounts of mercury. Please bring your bulbs to us for proper recycling . Use care when transporting. The Transfer Station bulb disposal shed is on the left side of the yard immediately after passing the Re-Use Shed

Cooking Oil - Next to the Bulb Shed, there is a 55 gallon drum for used cooking oil. Pour the used oil through the screen to filter out any food particles. Place container in waste can or take back home to reuse!

Mercury containing devices - Mercury-containing equipment that can be recycled includes: thermostats, barometers, mercury switches, old silver-mercury thermometers and some medical equipment. Mercury devices should be placed in closed, leak-proof, non-metal containers and brought to a household hazardous waste event. Check the website for dates.



Clothing - In addition to Stonington's Pink Bag program, residents can donate used clothing in one of the Goodwill Donation boxes located at the Transfer Station. Please, bag your donations and place them in the bin.

SCRRRA funds and administers a collection program for household hazardous waste from residents of our member municipalities.

Held April through November, these nine annual collections change location each month, providing free, convenient HHW disposal for homeowners. Residential paper shredding is also offered.

Check www.scrrra.org for the household hazardous waste collection schedule.



Leaf Composting and Leaf Mulch



Stonington residents can bring leaves to the Transfer Station at no charge, where they will be turned and composted. Drop off loose leaves or leaves in paper lawn bags at the leaf pile which is on your left side as you drive in.

The composted leaves are available at no charge to residents to use as an organic amendment and soil conditioner for gardens and flower beds.

Please pay close attention to contaminants such as plastic bags and trash in your leaf loads. We take pride in our compost and what goes in comes out. Thank you!



Stonington residents may bring brush to the Transfer Station at no charge. Brush is placed at the top of the hill on the right side. Being a member of SCRRA, the Town of Stonington benefits from wood chipping services. This allows us to process your yard waste and offer it back to you as mulch at no charge.



If you don't want to drive to the top of the hill, and only have a small pail or container, brush may also be thrown into Can #6 in the yard. Large amounts and truckloads, please go to the top of the hill.

SAFETY RULES



- Only enter when directed by an Attendant
- Obey traffic and 5mph speed limit signs
- No cell phone use while driving or unloading
- Do not leave running vehicles unattended
- No smoking/vaping/e-cigarettes or similar devices
- Please be patient and courteous while on our site
- Do not climb on railings/fencing or jersey barriers
- Please keep children and pets inside your vehicle. Do not let children play in the leaf piles.
- Vehicles must yield to Transfer Station trucks and equipment
- No scavenging at any time



Ways to Reduce Waste

Many of the decisions we make in our everyday lives have a major impact on the planet. The State of CT generates nearly 4 million tons of solid waste every year. You can make small changes that are eco-friendly and help reduce waste.

- **Use a reusable bottle/cup for beverages on-the-go**

You might already have a reusable water bottle, but do you use it all the time? You can put that reusable bottle to use, save money and reduce waste. By taking your own water with you, you'll also reduce your chances of purchasing more expensive beverages on-the-go. This will eliminate the one-time use containers they come in. While most cans and bottles can be recycled, they require a lot of energy to be produced, shipped to the bottling facility and then to the store for purchase.

- **Use reusable grocery bags**

Just like a reusable water bottle, you may already have a reusable grocery bag, though it's often forgotten at home. Try writing BAGS on the top of your grocery list to help you remember, or keep them in the back seat where they'll always be handy.

- **Purchase wisely and recycle**

You can reduce the amount of waste you produce by purchasing products that come with less packaging and/or come in packaging that can be recycled. Not all plastics are recyclable in Connecticut, so check labels before you buy.

- **Compost it!**

Did you know as much as 22% of the items in your trash could potentially be removed from the waste stream and composted in your back yard? Your fruit and vegetable scraps, egg shells, coffee grounds, grass clippings and leaves can all be composted. While composting requires a bit more effort than recycling, it will provide you with a beneficial return on your investment of time and effort.

- **Avoid single-use food and drink containers and utensils**

Whenever possible, try to avoid single-use coffee cups, disposable utensils, and straws. These items are made from plastic, had to be delivered by a truck and will end up in landfills or incinerators once we have used them one time. Anything we can do to reduce our use of these products can make a big impact.

- **Buy secondhand items and donate used goods**

Before you go buy something new, consider buying it used which can also save you money. That can mean buying secondhand clothes, used furniture and repurposed construction materials at a local thrift store or Habitat for Humanity's ReStore or searching Marketplace. In many cases, by purchasing secondhand items you'll be supporting local charities in addition to saving items from the waste stream.

- **Shop local farmers markets and buy in bulk to reduce packaging**

By shopping at farmers markets you'll be supporting local farmers while also getting fresher ingredients than you might find in the big-box grocery store. Food produced locally doesn't have to be shipped as far or refrigerated in transit. Local farmers often rely on less packaging and many are happy to have you return last week's berry basket or egg carton for use next week.

- **Curb your use of paper: mail, receipts, magazines**

In today's digital world, most companies offer bills by email, and some even offer incentives to do so. More stores are offering e-receipts, too, which are great because they're harder to lose if you need to make a return.

Stonington Transfer Station

Price List

**We accept Cash, Check or
Credit/Debit cards. Sorry no Apple
or Google Pay.**

- **Appliances (large) - \$10/each**
Washers, dryers, water heaters, stoves
- **Asphalt shingles, fiberglass, sheetrock - \$125/ton**
- **Bricks, cement blocks, dirt, rocks, broken cement - \$20/ton**
There is a 2YD limit
- **Brush from Commercial Landscapers - \$80/ton**
No charge for residents
Stumps are not accepted
- **Bulky Waste - \$125/ton**
Wood, plastic toys, windows, demo, carpets, etc.
Carpet must be in pieces no larger than 4' x 4'.
- **Freon appliances - \$10/each**
A/C's , refrigerators, freezers, dehumidifiers, water coolers
- **Furniture - \$10/each**
Couches, chairs, headboards,

"Reduce, Reuse, Recycle!"

We provide an efficient and effective Solid Waste Transfer / Recycling Station for Stonington residents with an ongoing commitment to provide a safe and simple way to dispose of their household trash.

Thank you for following the guidelines posted for the disposal of your trash & recyclables at the Transfer Station. This will assure that it will run safely for you and will keep our Transfer Station attendants safe.

